

SAFARI

Glamping paradise.

Il paradiso del glamping.

Adria Safari tents are one of a kind on the market. Based on the classic safari tent designs of the past but brought up to date with intelligently designed, modular design and world class construction. Nature proof with durable construction and canvas yet visually appealing, our Safari mobile tents will feed your imagination at first glance.

Le tende Adria Safari sono uniche nel loro genere sul mercato. Si ispirano ai classici modelli di tende da safari del passato rivisitate con un design modulare e intelligente ed una struttura di classe mondiale. "A prova di natura" con struttura resistente e tela di copertura visivamente accattivante, le nostre tende mobili Safari faranno correre la tua immaginazione non appena le vedrai.



SAFARI RANGE

MOBILETENTS
TENDEMÖBIL

GAMMA SAFARI



SAFARI

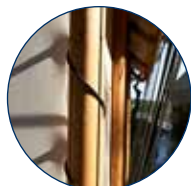
Safari tents have always been about survival in the toughest environments. With Adria's intelligent, modular design and world class materials and manufacturing, now you can go glamping with complete peace of mind. The Safari Series offers many customization options for a maximum living experience.

Le tende Safari hanno sempre ricordato la sopravvivenza negli ambienti più difficili. Grazie al design intelligente e modulare di Adria, oltre ai materiali e alle lavorazioni di classe mondiale, ora puoi anche fare glamping in completa tranquillità. La serie Safari offre molte opzioni di personalizzazione per la massima esperienza di vita.



SATTLER
thinking highPEX

Sattler PVC roof for long lifespan.
Tetto in PVC Sattler per una lunga durata.



Impregnated wooden beams.
Travi in legno trattato.



Galvanised steel connectors for strong and durable construction.
Giunzioni in acciaio galvanizzato per una costruzione forte e resistente a lungo.



1. DURABLE HIGH QUALITY ROOF

from PVC canvas with fire, water and UV-resistance for easy maintainance.

2. INNER TENT

from durable quality TenCate Cotton with fire, water and UV-resistance. TenCate CAMPSHIELD® FR 01 optional.

3. DOUBLE ROOF

for perfect air-flow and temperature management.

4. ROUND WOODEN BEAMS

diameter 100 mm impregnated in brown colour.

5. PANORAMIC WINDOWS,

entrance opening with zip-locker system and mosquito nets as option.

6. BUILT-IN TERRACE

with galvanized under construction and larchwood flooring with 2m roof extension.

1. TETTO DUREVOLE DI ALTA QUALITÀ,

in tela PVC ignifuga, idrorepellente e resistente ai raggi UV per una facile manutenzione.

2. TENDA INTERNA

di alta qualità resistenti in tela TenCate CAMPSHIELD® ignifuga, idrorepellente e resistente ai raggi UV.

3. DOPPIO TETTO

per una perfetta gestione del circolo d'aria e della temperature.

4. PALI TONDI DI LEGNO

per un trasporto e un'installazione facile e veloce.

5. FINESTRE PANORAMICHE,

entrata con Sistema di chiusura delle zip con luchetto e zanzariere come optional.

6. TERRAZZA

con copertura a tettoia nell'ingresso e ulteriori sezioni aperture di accesso disponibili come opzione.

Bring your safari closer to home, with luxury and home from home comforts. Fully equipped accommodation units with choice of interior design and maximum level of glamping comfort.

Porta il tuo safari più vicino a te, con il lusso e il comfort di una vera casa. Unità abitative completamente attrezzate con possibilità di scelta del design interno e massimo livello di comfort per il glamping.



Modern furniture details.

Dettagli di arredamento moderni.



Selected bathroom fixtures.

Infissi selezionati nel bagno.



Built-in fridge.

Frigorifero ad incasso.

I. KINGSIZE BEDS

in various configuration, mosquito nets, cushions and bedspreads as an option.

II. FULLY EQUIPPED BATHROOM

with shower, toilet and washbasin and electrical water heater.

III. KITCHEN UNIT

with sink, hob and built-in fridge. Available on L, M and Loft layouts.

IV. STYLISH AND DURABLE

vinyl flooring with water-resistant chipboard floor.

V. WOODEN INTERIOR WALLS

with integrated installations and LED lighting as an option.

VI. COMFORTABLE SOFA-BED.

Stylish and functional furniture element.

I. LETTI KING-SIZE,
zanzariere, cuscini e copriletti come opzione.

II. BAGNO COMPLETO
con doccia, WC, lavabo e scaldabagno elettrico.

III. CUCINA
attrezzata con lavello, piano cottura e frigo integrato. Disponibile nei layout L, M e Loft.

IV. ELEGANTE E DUREVOLE
pavimentazione di vinyl con pavimento in truciolato idrorepellente.

V. PARETI INTERNE IN LEGNO
con installazioni integrate e illuminazione a LED come opzione.

VI. COMODO DIVANO-LETTO.
Elementi di arredo eleganti e funzionali.

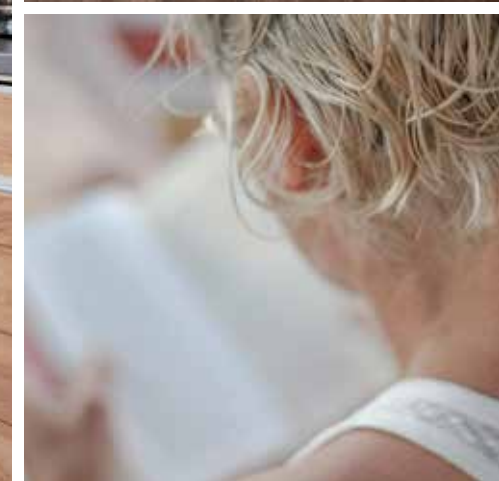
* Some features may not be available on all models. Please check www.adria-mobilehome.com for individual model specifications and technical details.

* Alcuni optional potrebbero non essere disponibili su tutti i modelli. Si prega di visitare il sito www.adria-mobilehome.com per le specifiche di ogni modello e i relativi dettagli tecnici.



Contemporary Safari tents with our unique interior design, offering a unique and comfortable glamping experience. Stylish, fully equipped glamping accommodation with a choice of layouts, furniture or even custom interior design.

Tende Safari contemporanee con un design interno unico, offrono una speciale e confortevole esperienza di campeggio di lusso. Alloggio elegante e completamente equipaggiato con una vasta scelta di layout, mobili e accessori e anche la possibilità di un design interno customizzato.



SAFARI L



A new model in the Safari family with an outstanding private loft balcony. More space for more comfort. Developed for maximum enjoyment with unique features. It is designed for exceptional experience in nature.

Un nuovo modello della famiglia Safari con un incredibile balcone loft privato. Più spazio per un maggiore comfort. Sviluppata per il massimo divertimento con caratteristiche uniche. Progettata per vivere un'esperienza eccezionale nella natura.

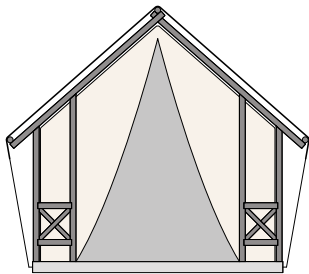


SAFARI M LOFT

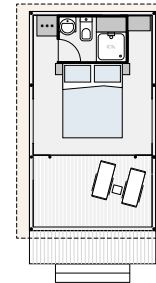
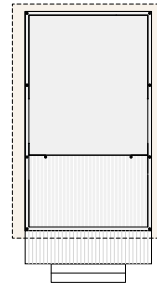
SAFARI *Layouts _ Layout*

Model *Modello* Front *Parte anteriore* Dimensions *Dimensioni* Basic Couple Comfort

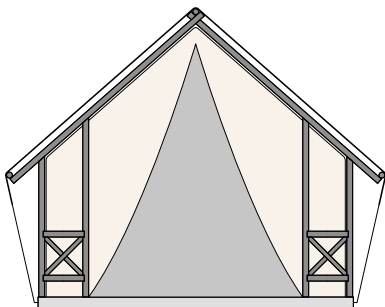
S



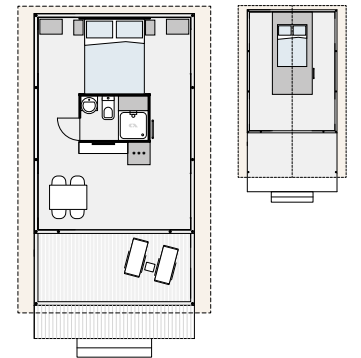
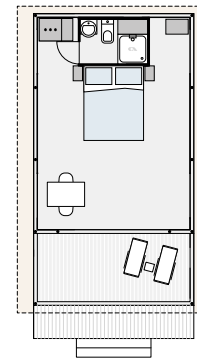
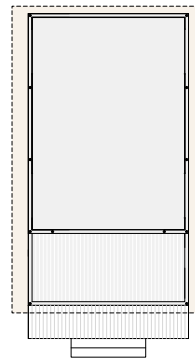
Exterior
Esterni
4,09 x 6,30 x 3,76 m
Interior
Interni
3,19 x 3,76 x 3,15 m
Terrace
Terrazza
3,19 x 1,91 m
Area
Area
18,12 m²
Transport
Trasporto
5,68 x 2,28 x 2,33 m



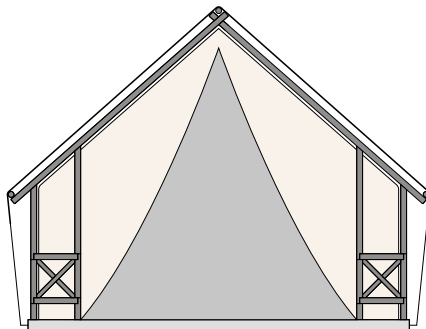
M



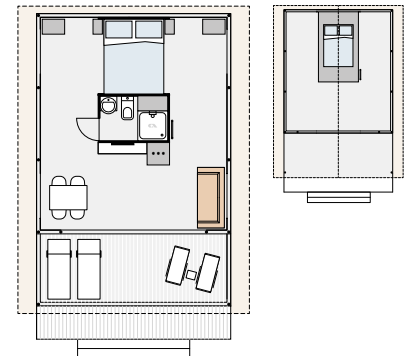
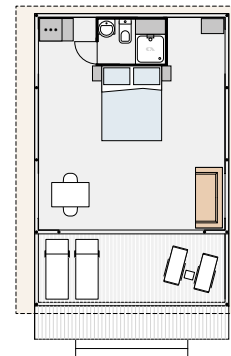
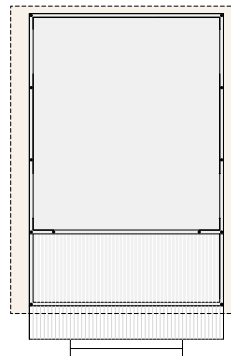
Exterior
Esterni
4,92 x 8,43 x 4,60 m
Interior
Interni
4,09 x 5,68 x 3,55 m
Terrace
Terrazza
4,09 x 1,91 m
Area
Area
31,12 + 7 m²
Transport
Trasporto
5,68 x 2,28 x 2,40 m



L



Exterior
Esterni
5,83 x 8,43 x 5,02 m
Interior
Interni
5,00 x 5,68 x 3,95 m
Terrace
Terrazza
5,00 x 1,91 m
Area
Area
38,00 + 7 m²
Transport
Trasporto
5,68 x 2,28 x 2,40 m



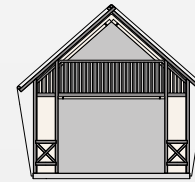
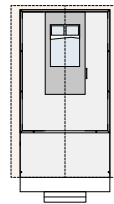
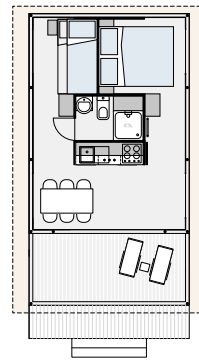
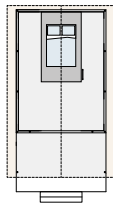
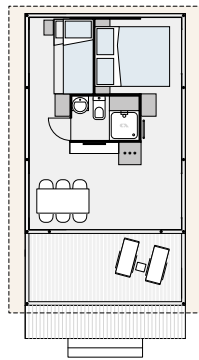
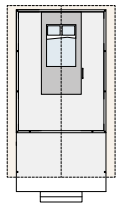
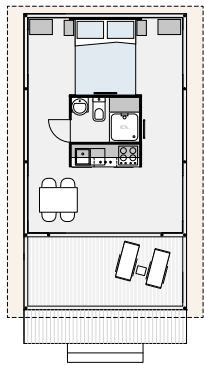
a x b x c
Length *Lunghezza* x Width *Larghezza* x Height *Altezza*

Comfort+

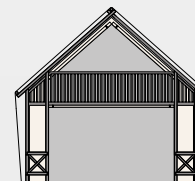
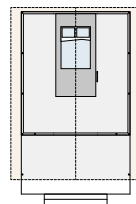
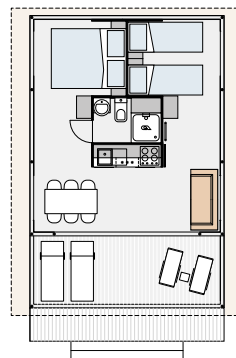
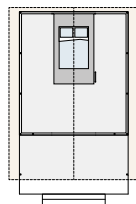
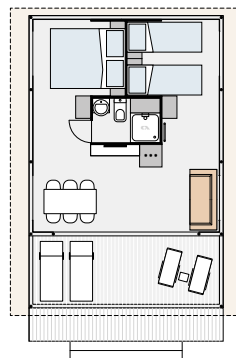
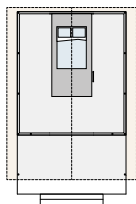
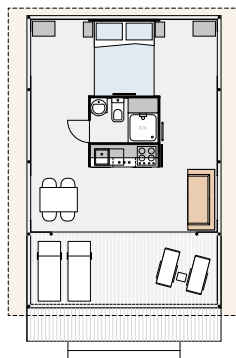
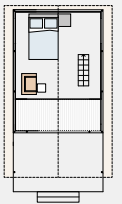
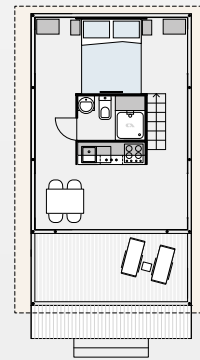
Family

Family+

Loft



Exterior
Esterni
4,92 x 8,43 x 5,24 m
Interior
Interni
4,09 x 5,68 x 2,05 m
Interior Loft
Interiore Loft
4,09 x 3,97 x 2,10 m
Area
Area
31,20 + 23 m²



Exterior
Esterni
6,16 x 8,43 x 5,48 m
Interior
Interni
5,00 x 5,68 x 2,05 m
Interior Loft
Interiore Loft
5,00 x 3,97 x 2,32 m
Area
Area
38 + 27,70 m²

